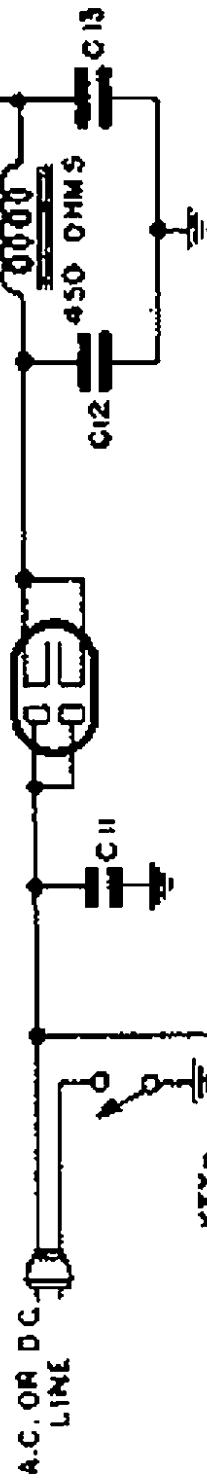
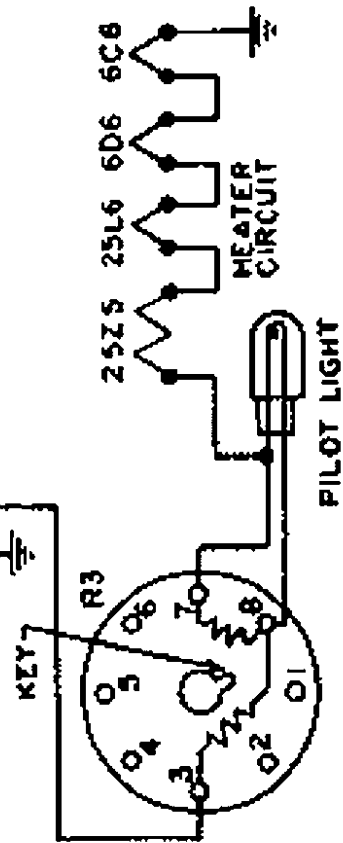


MODEL BM-206, BM-215



VIEW LOOKING AT PINS OF BALLAST TUBE R3, WHICH HAS AN OVERALL VOLTAGE DROP OF 54V. AT 3AMP VOLTAGE DROP ACROSS PILOT LIGHT IS 4 VOLTS.



CHASSIS MODEL BM

SCHEMATIC DIAGRAM
5 TUBE AC - DC RECEIVER

