

*Item	*Item	Part No.	DESCRIPTION	List Price as of July 1st, 1934 (Subject to change without notice)	PRICE
Model BM	Model BN				
T1	T1	6NT-437	Antenna coil	.....	.50
T2	T2	6NT-438	Detector coil	.....	.50
R1	—	2VR-519E	Volume control, 75,000 ohms, with line switch	.....	.90
R2	R1	2VR-219G	Volume control, 75,000 ohms, with line switch	.....	.90
R3	R2	3CR-294	240 ohm, 1/4 watt wire-wound resistor	.....	.16
R4	R3	L55-BG	Plug-in ballast tube	.....	.55
R5	R4	KR-63U	15,000 ohm, 1/4 watt carbon resistor	.....	.16
R6, R7	R5	HR-42U	2 megohm, 1/4 watt carbon resistor	.....	.16
R8	R6, R7	KR-56U	500,000 ohm, 1/4 watt carbon resistor	.....	.16
C1, C2	R8	3QR-297	110 ohm, 1/2 watt wire-wound resistor	.....	.16
C3	R9, R10	KR-55	250,000 ohm, 1/4 watt carbon resistor	.....	.16
†C4, C5	C1, C2	5MC-399	Two-gang variable condenser	.....	3.55
C6, C8	C3	NNC-199	.001 mf, 600 volt tubular condenser	.....	.20
C7	†C4, C5	—	Trimmers, part of variable condenser.	.....	
C9	C6, C8	AC-6	.1 mf, 200 volt tubular condenser	.....	.20
C10	C7	5AC-388	.25 mf, 100 volt tubular condenser	.....	.20
C11	C9, C15	LC-65	.02 mf, 400 volt tubular condenser	.....	.20
C12, C13	C10	LC-64	.05 mf, 400 volt tubular condenser	.....	.20
C14	C11	EEC-182	.1 mf, 400 volt tubular condenser	.....	.20
—	C12, C13	4DC-345A	Dual 16 mf, 100 volt dry electrolytic condenser (See prod. ch.)	.....	1.20
—	C14	5AC-384	.0002 mf, 600 volt tubular or mica condenser	.....	.20
—	C16, C17	BC-12	.05 mf, 200 volt tubular condenser	.....	.20
—	C18	BC-13	.25 mf, 200 volt tubular condenser	.....	.20
—	—	5BS-383	5" dynamic speaker (Model BM)	.....	3.90
—	—	5NS-395	5" dynamic speaker (Model BN)	.....	4.10
—	—	4BL-94	Pilot light, 6.3 volt, .25 amp., Mazda No. 44	.....	.20
—	—	4XM-367	Drive pulley	.....	.10
—	—	5MZ-829	Dial crystal (Model BM)	.....	.10
—	—	5NE-11	Dial crystal (Model BN)	.....	.15
—	—	5MZ-830	Drive shaft and pulley	.....	.10
—	—	4MZ-588B	Dial pointer	.....	.20
—	—	4YZ-772	Drive cord	.....	.02
—	—	5JZ-824	Drive cord spring	.....	.05
—	—	5MZ-831	Dial face (Model BM)	.....	.55
—	—	5ND-67	Dial face (Model BN)	.....	.15

**PRODUCTION CHANGE**

Note: Octal-base tubes may be replaced with other metal tubes or equivalent octal-base glass tubes.

**TUBE DATA**

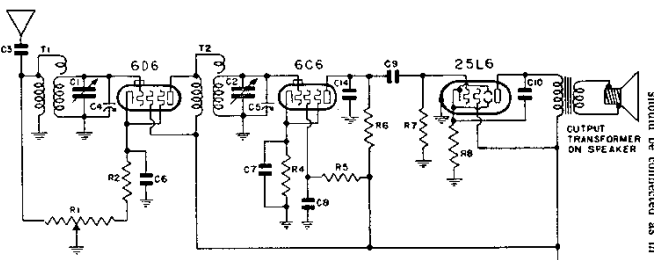
1-6D9	1-A Amplifier
1-6C6	1-A Detector
1-6G6	1-A Detector, output
1-6Z5	1-A 250 volt, 1/2 amp. heater
1-155B	1-155B, ballast tube

**ADDITIONAL PARTS USED ON BM-216 COMBINATION**

R11	KR-54	100,000 ohm, 1/4 watt carbon resistor	.....	.16
R12	2VR-219H	Phono volume control with motor switch—75,000 ohms	.....	.90
S1	5MS-348	Phono-radio-tone control switch	.....	.60
C19	XXC-207	.005 mf, 400 volt tubular condenser	.....	.20
	4XPM-15	Phono motor	.....	12.20
	4XZ-350	Crystal pick-up	.....	9.85
	3LM-253	Phonograph needle cup	.....	.20

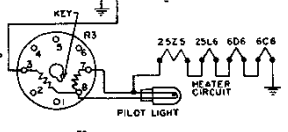
**ALIGNMENT PROCEDURE**

An oscillator with a frequency of 1400 kc is required. \*Item number locates the article on the schematic diagram. †These condensers cannot be supplied separately. Use as weak a test signal as possible. An output meter should be used across the voice coil or output transformer for observing maximum response. Rotate variable condenser to the maximum capacity position and set the pointer at the next calibration mark beyond 55. Then rotate the variable condenser until the pointer is at 140 and feed 1400 kc to the antenna through a .0001 mf mica condenser and adjust both trimmer condensers on the variable condenser for maximum response.



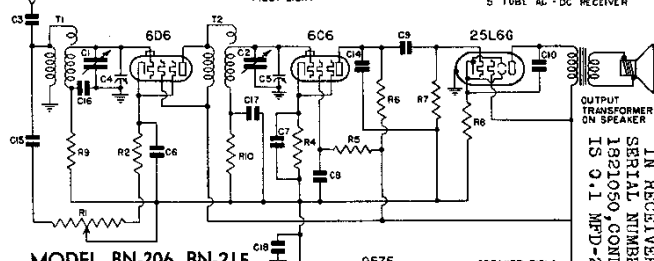
**MODEL BM-206, BM-215**

VIEW LOOKING AT PINS OF BALLAST TUBE R3, WHICH HAS AN OVERALL VOLTAGE DROP OF 54V AT 2 AMP. VOLTAGE DROP ACROSS PILOT LIGHT IS 4 VOLTS.



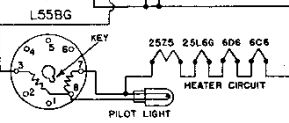
**CHASSIS MODEL BM**

**SCHEMATIC DIAGRAM**  
5 TUBE AC-DC RECEIVER



**MODEL BN-206, BN-215**

VIEW LOOKING AT PINS OF BALLAST TUBE R3, WHICH HAS AN OVERALL VOLTAGE DROP OF 50V AT 2 AMP. VOLTAGE DROP ACROSS PILOT LIGHT IS 4 VOLTS.



**CHASSIS MODEL BN**

**SCHEMATIC DIAGRAM**  
5 TUBE AC-DC RECEIVER

**BM-216 SCHEMATIC ON NEXT PAGE**  
**VOLTAGE ANALYSIS**

Voltage rating ..... 105 to 125 volts.  
 Power consumption ..... 45 watts for receiver.  
 10 watts for motor in Model BM-216.  
 Frequency range ..... 540 to 1730 kc.

Readings should be taken with a 1000 ohms-per-volt meter. Voltages listed below are from point indicated to ground (chassis) with volume control turned on full and no signal. The line voltage for these readings was 117.5 volts, 60 cycles, a.c. All readings except heaters and cathodes were taken on 250 volt scale.

Tube	Plate	Screen	Cathode	FIL
6D6	100	100	2.3	6.5
6C6	20	15	2.1	6.5
25L6G	93	100	6	25.0

Voltage across speaker field—26 volts.  
 25Z5 cathode to ground—126 volts.

BM, BN-216, BN-81